

vtech®

# Instruction Manual

# Peppa Pig™

## Peppa's Nursery Rhymes



Licensed by:

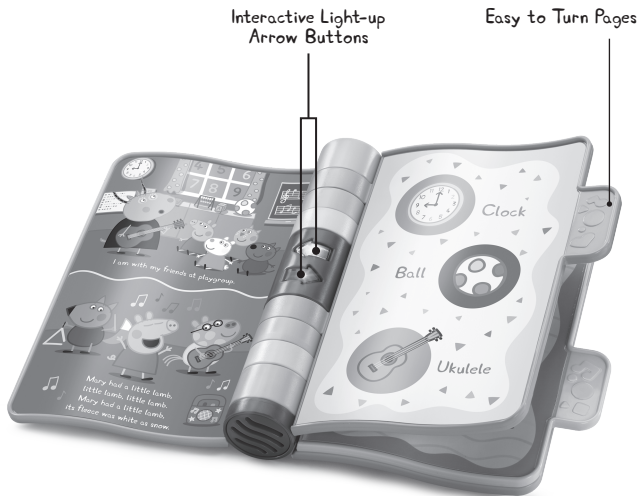


eOne™

# INTRODUCTION

Thank you for purchasing **Peppa's Nursery Rhymes**.

Read along and sing songs with Peppa Pig as she recites popular nursery rhymes. This book is an exciting page-turner with sturdy tabs and colorful, interactive pages kids will love to explore.



# INCLUDED IN THIS PACKAGE

- Peppa's Nursery Rhymes
- Quick Start Guide

## WARNING

All packing materials such as tape, plastic sheets, packaging locks, removable tags, cable ties, cords and packaging screws are not part of this toy, and should be discarded for your child's safety.

## NOTE

Please save this Instruction Manual as it contains important information.

## ATTENTION :

Pour la sécurité de votre enfant, débarrassez-vous de tous les produits d'emballage tels que rubans adhésifs, feuilles de plastique, attaches, étiquettes, cordons et vis d'emballage. Ils ne font pas partie du jouet.

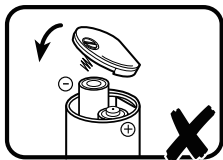
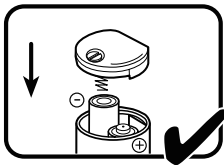
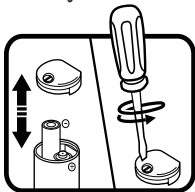
## NOTE

Il est conseillé de sauvegarder ce manuel d'utilisation car il comporte des informations importantes.

# GETTING STARTED

## Battery Removal and Installation

1. Make sure the unit is turned OFF.
2. Find the battery cover located on the top of the spine. Use a screwdriver to loosen the screw and then open the battery cover.
3. Remove old batteries by pulling up on one end of each battery.
4. Install 2 new AAA (AM-4/LR03) batteries following the diagram inside the battery box. (For best performance, alkaline batteries or fully charged Ni-MH rechargeable batteries are recommended.)
5. Replace the battery cover and tighten the screw to secure.



### WARNING:

Adult assembly required for battery installation.

Keep batteries out of reach of children.



### ATTENTION :

Les piles ou accumulateurs doivent être installés par un adulte.

Tenir les piles ou accumulateurs hors de portée des enfants.

## IMPORTANT: BATTERY INFORMATION

- Insert batteries with the correct polarity (+ and -).
- Do not mix old and new batteries.
- Do not mix alkaline, standard (carbon-zinc) or rechargeable batteries.
- Only batteries of the same or equivalent type as recommended are to be used.
- Do not short-circuit the supply terminals.
- Remove batteries during long periods of non-use.
- Remove exhausted batteries from the toy.
- Dispose of batteries safely. Do not dispose of batteries in fire.

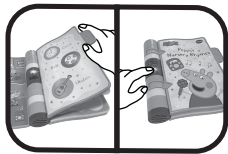
## RECHARGEABLE BATTERIES:

- Remove rechargeable batteries (if removable) from toy before charging.
- Rechargeable batteries are only to be charged under adult supervision.
- Do not charge non-rechargeable batteries.

## PRODUCT FEATURES

### 1. On/Off Control

To turn the unit **On**, turn the **Pages** or press the **Interactive Light-up Arrow Buttons** (➡). To turn the unit **Off**, close the book.



### 2. Automatic Shut-Off

To preserve battery life, the **Peppa's Nursery Rhymes** will automatically power down after approximately 25 seconds without input. The unit can be turned **On** again by pressing the **Interactive Light-up Arrow Buttons** or turning the **Pages**.

## NOTE

If the unit powers down or if the light fades out during play, please install a new set of batteries.

# ACTIVITIES

## 1. Interactive Light-up Arrow Button

Press the **Interactive Light-up Arrow Buttons** to hear a song, melody, phrase, fun sounds or short tune. The lights will flash with the sounds.



## 2. Turning Book Pages

Turn the **Pages** to hear a short tune and a sentence corresponding to the images on the pages. Close the book to hear a fun phrase. The lights will flash with the sounds.



# MELODIES

1. Hickory Dickory Dock
2. Bingo
3. Glow Worm
4. Itsy Bitsy Spider
5. The Wheels on the Bus
6. Hey Diddle Diddle
7. Twinkle Twinkle Little Star
8. London Bridge
9. Muffin Man
10. Oh Where Has My Little Dog Gone
11. Here We Go Round the Mulberry Bush
12. Are You Sleeping
13. Diddle, Diddle Dumpling
14. A-Tisket, A-Tasket
15. Polly Put the Kettle Captivate

# SONG LYRICS

## Song "Mary Had A Little Lamb"

Mary had a little lamb, little lamb, little lamb.

Mary had a little lamb, its fleece was white as snow.

## Song "Once I Caught A Fish Alive"

One, two, three, four, five, Once I caught a fish alive.

Six, seven, eight, nine, ten, then I let it go again.

## Song "Fruit"

Berries, cherries, bananas and apples too,

Fruit is tasty and it's so good for you.

# CARE & MAINTENANCE

1. Keep the unit clean by wiping it with a slightly damp cloth.
2. Keep the unit out of direct sunlight and away from any direct heat sources.
3. Remove the batteries if the unit will not be in use for an extended period of time.
4. Do not drop the unit on hard surfaces and do not expose the unit to moisture or water.

# TROUBLESHOOTING

If for some reason the program/activity stops working, please follow these steps:

1. Turn the unit **Off**.
2. Interrupt the power supply by removing the batteries.
3. Let the unit stand for a few minutes, then replace the batteries.
4. Turn the unit **ON**. The unit should now be ready to use again.
5. If the unit still does not work, install a new set of batteries.

## IMPORTANT NOTE

If the problem persists, please call our **Consumer Services Department** at 1-800-521-2010 in the U.S., 1-877-352-8697 in Canada, or by going to our website [vtechkids.com](http://vtechkids.com) and filling out our **Contact Us** form located under the **Customer Support** link. Creating and developing VTech products is accompanied by a responsibility that we take very seriously. We make every effort to ensure the accuracy of the information, which forms the value of our products. However, errors sometimes can occur. It is important for you to know that we stand behind our products and encourage you to contact us with any problems and/or suggestions you might have. A service representative will be happy to help you.

## NOTE

This equipment has been tested and found to comply with the limits for a Class B digital device, pursuant to Part 15 of the FCC Rules. These limits are designed to provide reasonable protection against harmful interference in a residential installation. This equipment generates, uses and can radiate radio frequency energy and, if not installed and used in accordance with the instructions, may cause harmful interference to radio communications. However, there is no guarantee that interference will not occur in a particular installation. If this equipment does cause harmful interference to radio or television reception, which can be determined by turning the equipment off and on, the user is encouraged to try to correct the interference by one or more of the following measures:

- Reorient or relocate the receiving antenna.
- Increase the separation between the equipment and receiver.
- Connect the equipment into an outlet on a circuit different from that to which the receiver is connected.
- Consult the dealer or an experienced radio/TV technician for help.

## CAUTION

Changes or modifications not expressly approved by the party responsible for compliance could void the user's authority to operate the equipment.



**Supplier's Declaration of Conformity**  
47 CFR § 2.1077 Compliance Information

Trade Name: VTech®  
Model: 5519  
Product Name: Peppa's Nursery Rhymes  
Responsible Party: VTech Electronics North America, L.L.C.  
Address: 1156 W. Shure Drive, Suite 200  
Arlington Heights, IL 60004  
Website: vtechkids.com

THIS DEVICE COMPLIES WITH PART 15 OF THE FCC RULES.  
OPERATION IS SUBJECT TO THE FOLLOWING TWO CONDITIONS:  
(1) THIS DEVICE MAY NOT CAUSE HARMFUL INTERFERENCE, AND  
(2) THIS DEVICE MUST ACCEPT ANY INTERFERENCE RECEIVED,  
INCLUDING INTERFERENCE THAT MAY CAUSE UNDESIRE  
OPERATION.

Visit our website for more  
information about our products,  
downloads, resources and more.

*vtechkids.com*

*vtechkids.ca*

Read our complete warranty policy online at  
*vtechkids.com/warranty*  
*vtechkids.ca/warranty*

